

4V100 系列电磁阀、气控阀

4V100 Series Solenoid Valve, Pneumatic Control Valve



订购码 | Ordering Code

4V	1	10	-	06	B	AC220V	-	W
规格代码 4V: 二(三)位五通电磁阀 4A: 二(三)位五通气控阀 3V: 二位三通电磁阀 3A: 二位三通气控阀 Specification Code 4V: Two (Three)-position Five-way Solenoid Valve 4A: Two (Three)-position Five-way Pneumatic Control Valve 3V: Two-position Three-way Solenoid Valve 3A: Two-position Three-way Pneumatic Control Valve	系列代码 100 系列 Series Code 100 Series	线圈及位数 10: 单头双位置 20: 双头双位置 30C: 双头三位置封闭型 30E: 双头三位置排气型 30P: 双头三位置压力型 Coil and Places 10: Single-head Double-position 20: Double-head Double-position 30C: Double-head Three-position Close Type 30E: Double-head Three-position Exhaust Type 30P: Double-head Three-position Pressure Type		接管口径 Joint Pipe Bore M5: M5 × 0.8 06: 1/8"	接管形式及初始状态 空白: 管接式 B: 二位五通板接式 三位五通板接式 NC: 二位三通常闭型 NO: 二位三通常开型 Joint Pipe Form and Initial State Blank: Pipe Connection Type B: Two-position Five-way Plate Connection Type Three-position Five-way Plate Connection Type NC: Two-position Three-way Normal Close Type NO: Two-position Three-way Normal Open Type	标准电压 Standard Voltage DC12V DC24V AC24V 50Hz/60Hz AC110V 50Hz/60Hz AC220V 50Hz/60Hz AC380V 50Hz/60Hz		接线形式 空白: 标准端子式 LD: 棕色带灯端子式 LD ₁ : 白色带灯端子式 W: 引线式 Wiring Form Blank: standard Connector LD: Brown with Lighting Connector LD ₁ : White with Lighting Connector W: Lead Wire Type

规格 | Specification

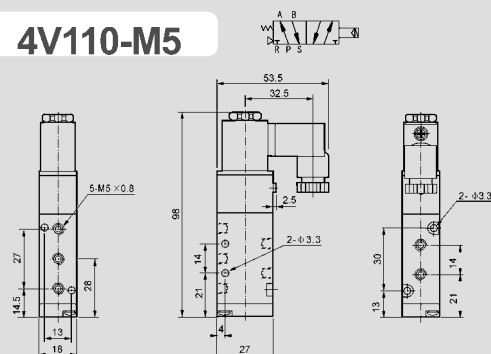
型 号	4V110-M5 4V120-M5		4V130C-M5 4V130E-M5 4V130P-M5		4V110-06 4V120-06		4V130C-06 4V130E-06 4V130P-06	
Model	4A110-M5 4A120-M5	4A130C-M5 4A130E-M5 4A130P-M5	4A110-06 4A120-06		4A130C-06 4A130E-06 4A130P-06			
位通数 Position and Way NO.	二位五通 Two-position Five-way	三位五通 Three-position Five-way		二位五通 Two-position Five-way		三位五通 Three-position Five-way		
有效截面积 Effective Sectional Area	10mm²(CV=0.56)	7mm²(CV=0.40)		12mm²(CV=0.67)		9mm²(CV=0.5)		
型 号	Model	3V110-M5 3V120-M5	3A110-M5 3A120-M5	3V110-06 3V120-06	3A110-06 3A120-06			
位通数 Position and Way NO.	二位三通 Two-position Three-way			二位三通 Two-position Three-way				
有效截面积 Effective Sectional Area	10mm²(CV=0.56)			12mm²(CV=0.67)				
接管口径 Joint Pipe Bore	进气=出气=排气= M5 × 0.8 Air Inlet=Air Outlet=Exhaust=M5 × 0.8			进气=出气=排气= G1/8 Air Inlet=Air Outlet=Exhaust=G1/8				
工作介质 Working Medium	经 40 微米过滤的空气 40 Micron Filtered Air							
动作方式 Motion Pattern	内部先导式			Inner Guide Type				
使用压力 Working-pressure	0.15~0.8MPa							
最大耐压力 Max. Pressure Resistance	1.2MPa							
工作温度 Operating Temperature	5~50℃							
电压范围 Voltage Range	± 10%							
耗电量 Power Consumption	AC: 2.5VA DC: 2.5W							
绝缘性及防护等级 Insulation & Protection Class	F 级. IP65 F Class. IP65							
接线形式 Wiring Form	出线式或端子式			Lead Wire or Connector type				
最高动作频率 Highest Action Frequency	每秒五次			5 Cycle / Sec				
最短励磁时间 Shortest Excitation Time	0.05 秒			0.05 Second				

4V100 系列电磁阀、气控阀

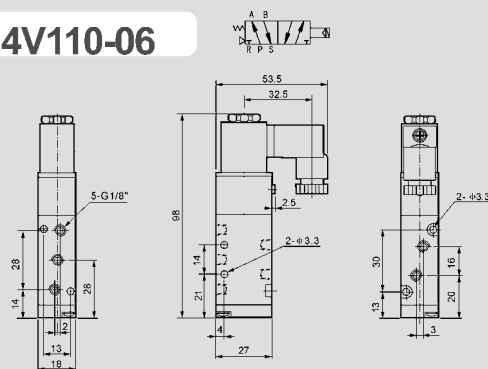
4V100 Series Solenoid Valve, Pneumatic Control Valve

外形尺寸 | Overall Dimension

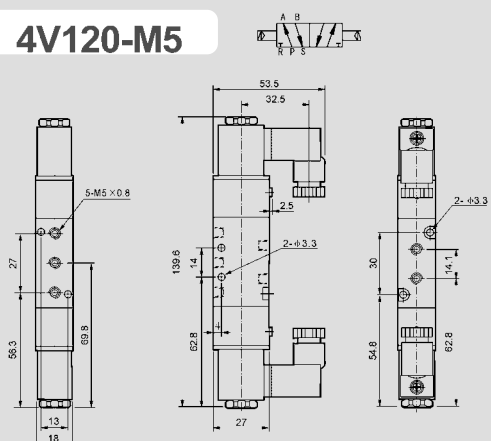
4V110-M5



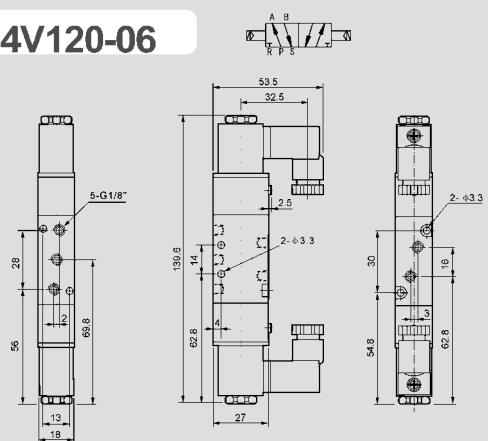
4V110-06



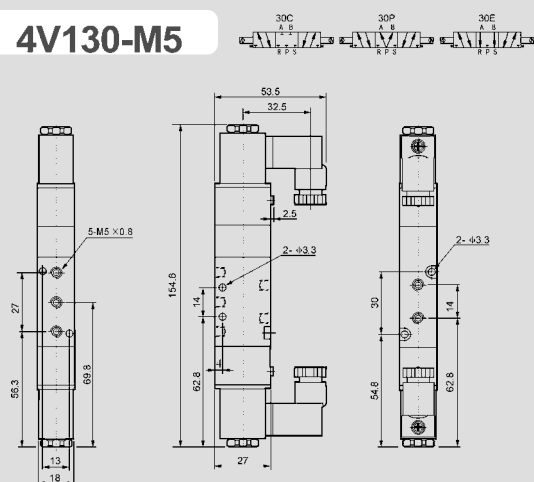
4V120-M5



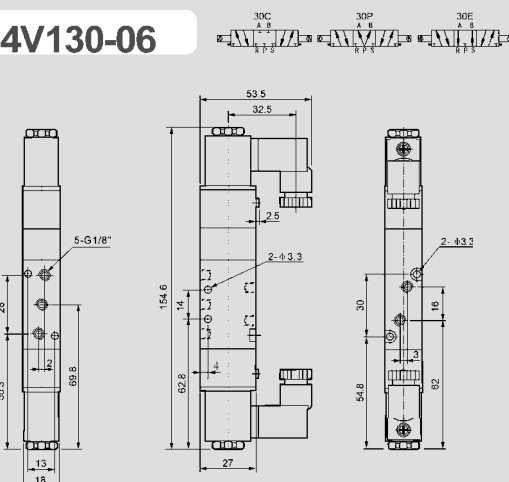
4V120-06



4V130-M5

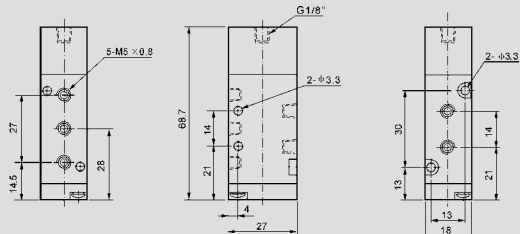
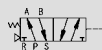


4V130-06

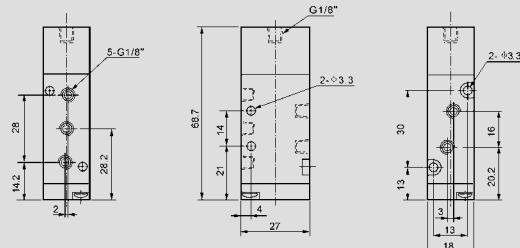


4V100 Series Solenoid Valve, Pneumatic Control Valve

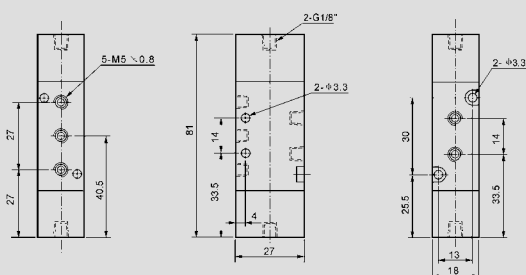
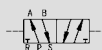
4A110-M5



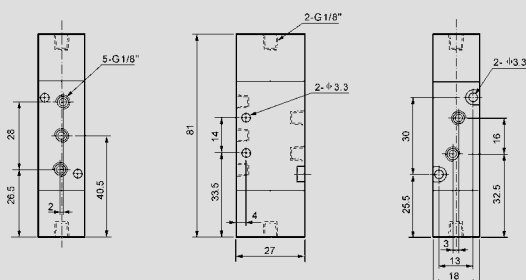
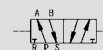
4A110-06



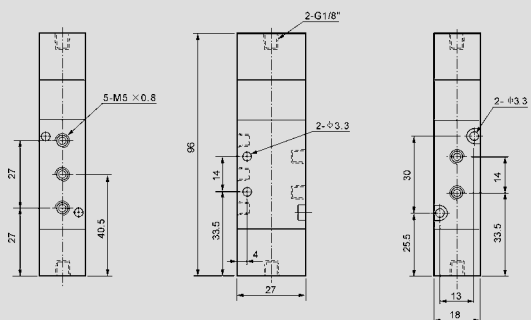
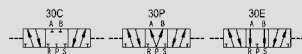
4A120-M5



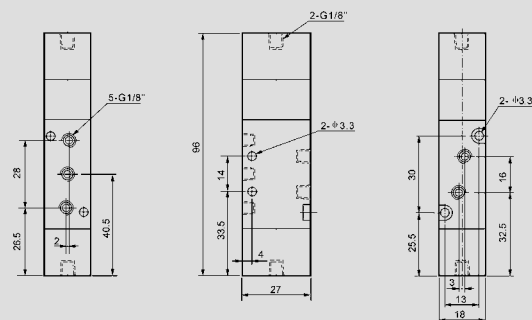
4A120-06



4A130-M5



4A130-06

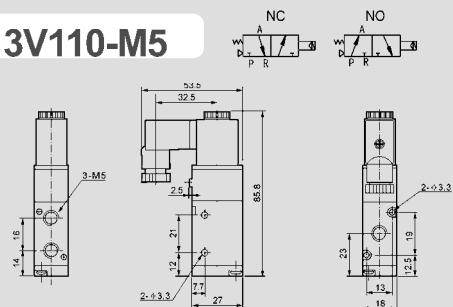


4V100 系列电磁阀、气控阀

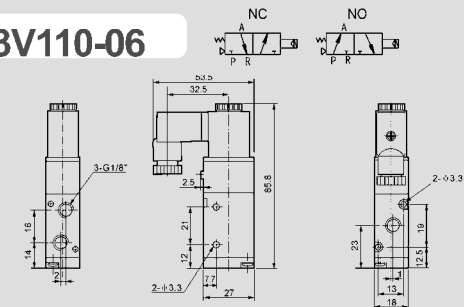
4V100 Series Solenoid Valve, Pneumatic Control Valve

外形尺寸 | Overall Dimension

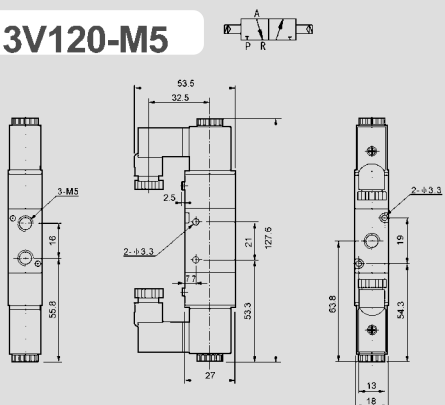
3V110-M5



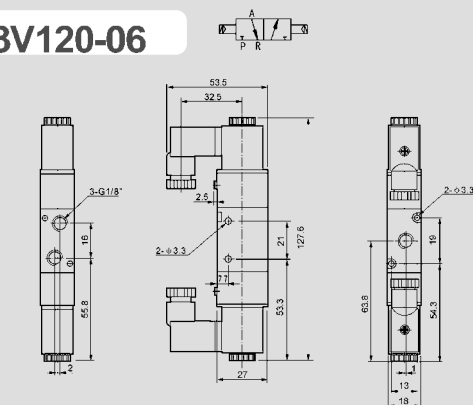
3V110-06



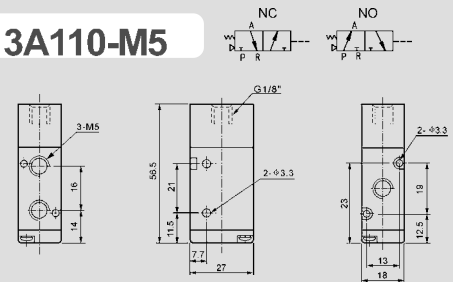
3V120-M5



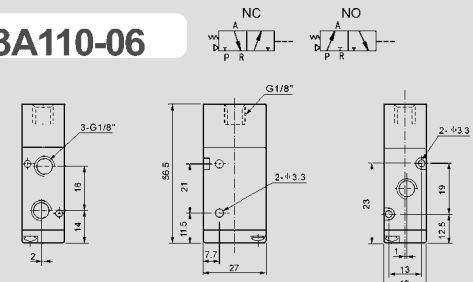
3V120-06



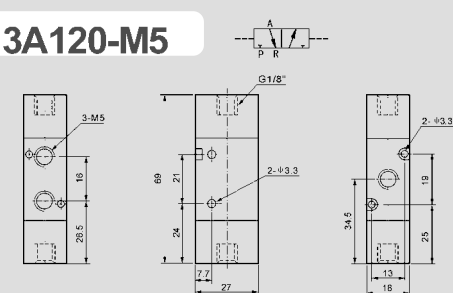
3A110-M5



3A110-06



3A120-M5



3A120-06

